



WS624

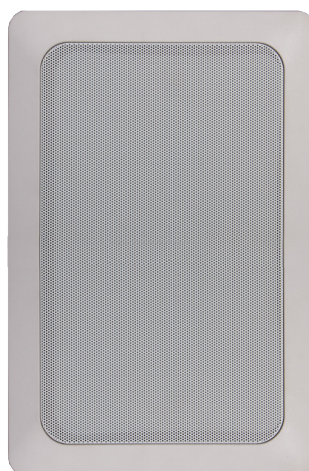
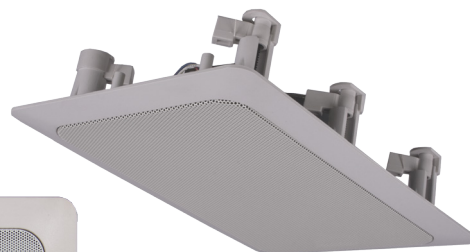
2-Way 5 ¼" in-wall/ceiling speaker

► Features

- High-quality in-wall/ceiling loudspeaker
- 5 ¼" 2-Way driver
- Fast-con™ connections
- 100V multitap transformer & 8 Ohm bypass
- Moisture proof cone treatment
- Aluminum front grill
- Wide 100° conical coverage
- Quick-fit installation system
- Paintable to blend-in

► Applications

- Hotels
- Restaurants & pubs
- Corporate offices
- Retail stores & warehouses
- Public buildings
- Airports & train stations
- ...



The WS series loudspeakers are high-quality in-wall/ceiling loudspeakers, delivering exceptional sound quality and value for a wide variation of applications, ranging from paging and announcements to background music systems in a wide range of business applications, including hotels, restaurants and pubs, corporate offices, retail stores, etc.

The WS624 in-wall/ceiling loudspeaker features a 5 ¼" driver with a 1" tweeter, having a continuous power handling of 30 Watt and a maximum power handling of 60 Watt. The 2-way construction makes the WS624 the perfect match for a wide variation highly demanding of applications, guaranteeing a high-quality and true-to-nature reproduction of music and speech.

The moisture proof treatment on the speakers' cone and aluminum front grill protects it for installation in humid or outdoor environments.

A multi-tapping line transformer fitted with Fast-con™ allows fast and smooth connections to 100 Volt public address or low impedance systems. The mounting of the loudspeaker into the wall or ceiling is achieved with a Quick-fix mechanism, offering a great installers convenience and life-time stability.

The construction of the speakers' housing is made out of high-quality ABS, while the front is covered by a solid powder-coated aluminum grille. Custom painting is possible for a total blending into any environment.

► Specifications

SYSTEM SPECIFICATIONS	
Speaker type	2-Way
Max. power	60 W
RMS power	30 W
Impedance	8 Ohm <i>16 Ohm version also available (WS624D)</i>
Line transformer power taps	24 Watt / 417 Ohm
	12 Watt / 833 Ohm
	6 Watt / 1667 Ohm
Sensitivity (1W/1m)	92 dB
Sound pressure (Max W/1m)	107 dB
Frequency response (± 3 dB)	60 Hz - 20 kHz
Frequency range (-10 dB)	50 Hz - 20 kHz
Cross-over type	Passive built-in
Horizontal dispersion	100°
Vertical dispersion	100°
PRODUCT FEATURES	
Dimensions (Diameter x Depth)	280 x 192 x 90 mm
Weight net	1.56 Kg
Connection	Multi-tap Fast-con™ connections
Drivers	5 ¼" MF/LF woofer
	1" HF tweeter
Construction	High quality ABS housing
Grill type	Fine perforated aluminum grill
Cut-out measurement	245 x 155 mm
Built-in Depth	85 mm
Mounting & Handling	Quick-fit installation system (4-screw)
Available Colours	WS624 White (NCS S1000-N)
	WS624/W White (RAL9010)
SHIPPING & ORDERING	
Packaging	Carton box
Shipping Weight & Volume	1.7 Kg - 0,0088 Cbm
Accessories Included	Foam inlay
	Cut-out template
*AUDAC reserves the right to change specifications without notice: this is part of our policy to continually improve our products	